

Our proposal

About the ABMO

The ABMO has been formed from a collaboration between the following groups:

Nikki Alberts, White Alpine Equine Care and Brumby Rescue

Jill Pickering, Australian Brumby Alliance

Lynnette Sutton, Hoofs2010

Kelli Sinclair-Hicks, Indigo Brumbies

Colleen O'Brien, Victorian Brumby Association

Jan Carter, Save The Brumbies

Jill Brown, Waler Database

Pat Hoelmer, Friends of Wild Horses

Geoff Court, Rivergums Brumby Horses

Should a working agreement and funding be obtained, we will engage further with reputable rehomingers, trainers and experienced horsemen/women to build a strong network of successful Brumby supporters.

Should a working agreement and funding not be obtained, we will continue working as we are as individual groups under our own funding model and approach.

Mission statement

To assist in the definition and implementation of humane management strategies for displaced Brumbies by:

- Defining and providing guidance on best practice management, including passive trapping, handling, transport and ongoing care (rehoming, adoption, sanctuary) to all member associations, groups and individuals
- Providing financial support to all member associations, groups and individuals working in the field of rescue, rehoming and sanctuary of Brumbies across Australia
- Providing advice and working with non-member associations to share best practices and better welfare outcomes
- Providing ongoing review and recording of all Brumbies involved with ABMO to ensure visibility of outcomes achieved

The Brumbies need an optimum solution that addresses the many areas that impact them, both with remaining in the Parks, and being removed.

Key focus areas

Key factors for our focus are:

| | |
|--|---|
| Brumby welfare and maintenance of numbers | Fertility control |
| Herd and horse health – both in the Parks and when rehomed/adopted | Handling and training |
| Keeping in Retention Zones | Safe transport guides |
| Passive trapping | Rehoming |
| Weaning | Sanctuaries |
| Elderly/injured horse management | Tourism, |
| Inspection of properties/advice/support to potential rehomers/adopters | End to end tracking of, and reporting on, Brumby welfare once removed from Park |

Table 1: Key factors for focus

Proposed structure

The below model is not meant to indicate hierarchy – it reflects the different areas of engagement. In addition to those groups mentioned, we also intend to engage with local Ngarigo Elders, First Nations peoples from other relevant areas, and experienced local horsemen/women who know the area and the herds well.

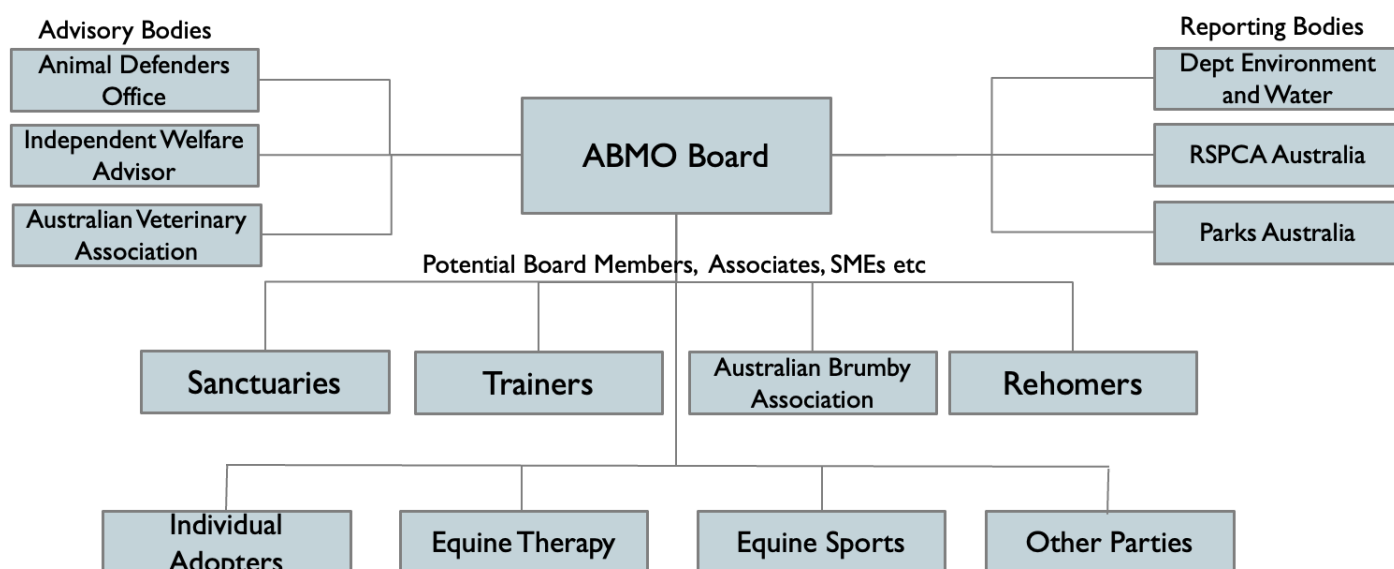


Figure 1: Proposed Structure

Benefits

This approach benefits the Government as it removes the pressure on the Government, RSPCA and National Parks and Wildlife to manage the Brumbies' complex needs.

The benefits to the ABMO is from being able to draw on decades of consolidated experience regarding the horses' welfare, well-being and retention of their heritage values to take accountability for the results.

Phase one – focus on Kosciuszko National Park (KNP) Northern Block, NSW

To ensure a sustainable model is created, we recommend a phased approach:

1. Assess 'size' of need
 - Understand final number of horses remaining in KNP (NSW)
2. Agree plan of action
 - Horses requiring trapping for welfare, weaning, rehoming, fertility control testing
 - Horses to be moved to Retention areas
 - Facilities available (ie; Blowering for NSW KNP)
 - Resources available/needed
 - Agree funding model
 - Receive funding
 - Implement and report on Plan
4. Engage with individual State representatives (Parks, RSPCA, Rehomers, Sanctuaries)
5. Engage with Trainers to ascertain numbers and level of training provided
6. Engage with the public to request EOIs for rehoming/adoption/training/sanctuary
7. Commence Management Plan and reporting processes on welfare
8. Assess success/remediation and agree next Phase focus area

Funding requirements

Government funding

The NSW Government has generously funded the RSPCA to enable them to meet their legislative obligations under the State's animal welfare laws and to be a leading source of animal welfare science, who work with governments and industries to progress animal welfare across a range of issues. The ABMO would seek funding from the NSW Government to enable them to provide the same level of focus and care to the Australian Brumby.

Self-generated from sale of handled brumbies to approved adopters, training and other activities

The ABMO aims to be partially publicly funded/income generating from adoption, training, tourism and other (welfare approved) activities. This will take some time to achieve and will need the organisations facilities, processes and procedures to be established and working smoothly.

Sponsorship

For horses who are unable to be rehomed or require additional time for training or sourcing the right adopter, Sponsorship from the public will be requested.

Summary

We believe our solution works well for the Government, the RSPCA and National Parks and Wildlife as it provides a structure and organisation for experienced Brumby people to take accountability for the horse's welfare.

We hope you will consider this proposal and refer questions and suggestions to us prior to an initial meeting so that we can build a collaborative and productive working relationship with you.

For further information, please contact Nikki Alberts on australianbrumbymanagement@gmail.com or 0434 493 090.