

HOW YOU CAN HELP STOP PARKS VICTORIA

Why we need to act now

Parks Victoria ALPINE Wild Horse plan has been trapping eastern Alpine Brumbies for several months, and it is only ABA legal moves temporarily preventing Parks Vic from removing Bogong High Plains Brumbies. We have a strong case and a good legal team, but that does not guarantee success. Here's what you can do to support and promote support for Victorian Alpine Wild Horses/Brumbies.

Victorians can help greatly by:

- writing short letters to;
 - their local MP, their 5 region representatives (see [instructions below](#)), plus
 - Lily D'Ambrsio (Vic Environment minister), and
 - Floyd Chair, Parks Victoria Board (Contact details below)
 - Parks Victoria's CEO (*Contact details below*)

Non-Victorians can greatly by:

- writing short letter to;
 - Lily D'Ambrsio, environment minister (contact details below) and
 - Parks Victoria Board Chair person (Contact details below)
 - Parks Victoria's CEO (*Contact details below*)

When writing your short, clear, polite letter/s (one line is sufficient) about for example;

- Why you want to keep sustainably managed Wild Horse/Brumby populations in the Alpine areas of the eastern Alps and Bogong High Plains,
- Why you do **not** want to any Brumby population managed to **extinction**,
- What does our Wild Horse/Brumby social Heritage mean to you,
- Why seeing Brumbies living wild uplifts your spiritual wellbeing etc.

CONTACT details below for;

The Hon. Lily D'Ambrosio, Minister for the Environment, Level 16, 8 Nicholson Street, East Melbourne, Vic 3002 - Via lily.d'ambrosio@parliament.vic.gov.au

Mr. Jeff Floyd, Chair of the Board of Parks Victoria

Level 10, 535 Bourke Street, Melbourne VIC 3000 Via: info@parks.vic.gov.au

Mr. Mathew Jackson, CEO, Parks Victoria, Level 10, 535 Bourke Street, Melbourne VIC 3000

Via: info@parks.vic.gov.au

.....

Finding your Victorian government representatives

<https://www.parliament.vic.gov.au/findelectorate/>

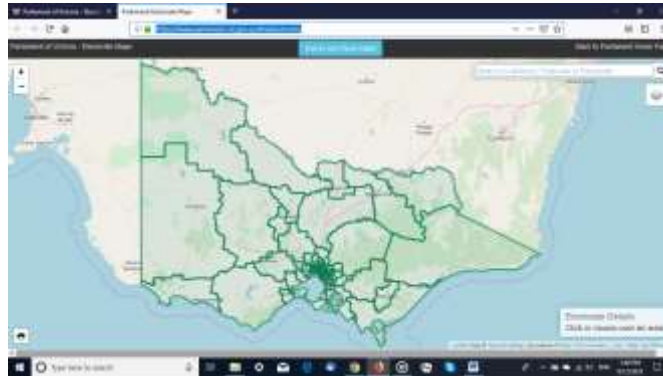
Background

Every Victorian is represented in State Parliament by 6 Members:

- 5 Members of the Legislative Council, in a larger electorate called a Region.

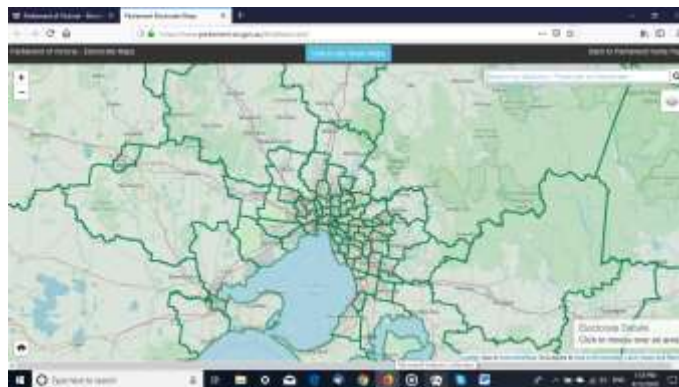
- 1 Member of the Legislative Assembly, in an electorate called a District

Step 1 – Bring up the Map on link: <https://www.parliament.vic.gov.au/findelectorate/> to see the whole of Victoria electorates. This link brings up the screen shot example below



Use these maps to find the name of your Federal, State and Local council electorates.

Step 2 – Enlarge map if needed - Metropolitan electorates require magnification to see map electorate details (screen shot below). To magnify/enlarge, RIGHT click on page map, find options Zoom in/Zoom out, then LEFT click on **Zoom in** to magnification needed.



Example: Maps magnify/enlarge to identify Melbourne metropolitan electorates.

Step 3 - After identifying your electorate, the next step is to find your

- 5 Members of the Legislative Council, in a larger electorate called a **Region**.
- 1 Member of the Legislative Assembly, in an electorate called a **District**

To find your one Member of the Legislative Assembly, representing your electorate you;

- **hover the cursor over your own district, then**
- right click on the district map to bring up the choice of “Find **Region** members” or “Find **District** member”, then
- left click to bring up electorate member’s details (email, ring, message on form etc.)

Step 4 - Writing to your one electorate member, then to any/all of the 5 District members. Write short, clear statements in your letter about why you want to keep Wild Horse/Brumby populations in The Victorian Alpine regions of;

- **Bogong High Plains** (Western Vic Alps region) with 100 Wild Horses/Brumbies that Parks Victoria have been approved to remove the entire population asap, and
- **Eastern Victorian Alpine region** (borders onto NSW) with 2,350 Brumbies/Wild Horses that Parks Victoria have approval to remove 1,200 by the year 2021

***Note**, there is also a **Barmah** population of 100-150 Wild Horses/Brumbies in Barmah National Park (near Echuca) which Parks Victoria want to totally remove, but the Barmah Wild Horse management plan is still under review by.*